

133 EAST 58 STREET

PLAZA DISTRICT

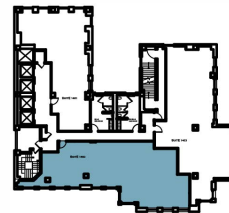
Partial 14th Floor, Suite 1402 | OFFICE TEST-FIT | 2,879 SF



WORK PLACE		people
Private office	2	
Open work area	12	
Total	14	
MEET		people
Meeting room	5	
Total	5	

SOCIAL		
	areas	seats
Reception	1	1
Lounge	1	2
Pantry	1	2
Total	3	5

Total Dedicated Desks 15 people
Total Collaborative Seats 17 people



JP Jack Resnick & Sons
Owners & Builders Since 1928

110 East 59 Street
 New York, NY 10022-1379
 resnicknyc.com

Fran Delgorio
 646.253.3100
 fdelgorio@resnicknyc.com

Brett S. Greenberg
 646.253.3113
 bgreenberg@resnicknyc.com



No warranty or representation, express or implied, is made as to the accuracy of the information contained herein, and same is submitted subject to errors, omissions, change of price, rental other conditions, withdrawal without notice, and to any special listing conditions, imposed by our principals.

133 EAST 58 STREET

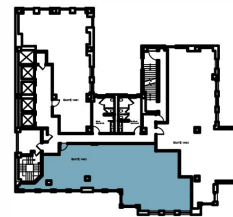
PLAZA DISTRICT

Partial 14th Floor, Suite 1402 | **MEDICAL TEST-FIT** | **2,879 SF**



MEDICAL		people
Consultation room	3	
Exam & procedure room	6	
Total	8	
SOCIAL		
areas	seats	
Reception	1	2
Waiting area	1	6
Pantry	1	-
Total	3	8

Total Dedicated Desks 10 people
Total Collaborative Seats 18 people



JP Jack Resnick & Sons
 Owners & Builders Since 1928

110 East 59 Street
 New York, NY 10022-1379
 resnicknyc.com

Fran Delgorio
 646.253.3100
 fdelgorio@resnicknyc.com

Brett S. Greenberg
 646.253.3113
 bgreenberg@resnicknyc.com



No warranty or representation, express or implied, is made as to the accuracy of the information contained herein, and same is submitted subject to errors, omissions, change of price, rental other conditions, withdrawal without notice, and to any special listing conditions, imposed by our principals.