

133 EAST 58 STREET

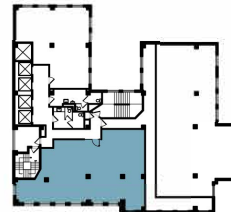
PLAZA DISTRICT

Partial 11th Floor | Suite 1102 | MEDICAL Test-Fit | 2,734 SF



MEDICAL		people	
Consultation room		3	
Medical assistant		2	
Exam & procedure room		4	
Lab room		1	
Total		10	
ADMINISTRATION		people	
Manager office		1	
File room		1	
Total		2	
SOCIAL		areas	seats
Reception	1	1	
Waiting area	1	3	
Break room	1	3	
Total	3	7	

Total Dedicated Desks 13 people
Total Collaborative Seats 6 people



JP Jack Resnick & Sons
 Owners & Builders Since 1928

110 East 59 Street
 New York, NY 10022-1379
 resnicknyc.com

Fran Delgorio
 646.253.3100
 fdelgorio@resnicknyc.com

Brett S. Greenberg
 646.253.3113
 bgreenberg@resnicknyc.com

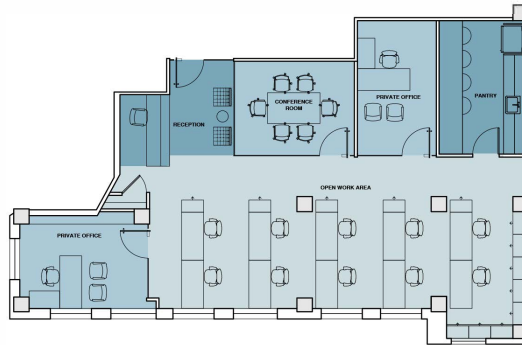


No warranty or representation, express or implied, is made as to the accuracy of the information contained herein, and same is submitted subject to errors, omissions, change of price, rental other conditions, withdrawal without notice, and to any special listing conditions, imposed by our principals.

133 EAST 58 STREET

PLAZA DISTRICT

Partial 11th Floor | Suite 1102 | OFFICE Test-Fit | 2,734 SF

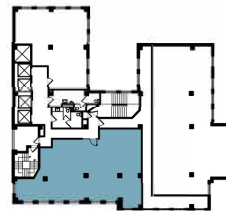


WORK PLACE		people
Private office		2
Open work area		10
Total		12

MEET		people
Conference room		5
Total		5

SOCIAL		
	areas	seats
Reception	1	1
Waiting area	1	2
Pantry	1	4
Total	3	7

Total Dedicated Desks 13 people
Total Collaborative Seats 11 people



 Jack Resnick & Sons
Owners & Builders Since 1928

110 East 59 Street
New York, NY 10022-1379
resnicknyc.com

Fran Delgorio
646.253.3100
fdelgorio@resnicknyc.com

Brett S. Greenberg
646.253.3113
bgreenberg@resnicknyc.com



No warranty or representation, express or implied, is made as to the accuracy of the information contained herein, and same is submitted subject to errors, omissions, change of price, rental other conditions, withdrawal without notice, and to any special listing conditions, imposed by our principals.