

TRIBECA

NEW YORK
NY

200 CHAMBERS STREET



CONCEPTUAL RENDERING

SPACE DETAILS

LOCATION

South block between West and Greenwich Streets

APPROXIMATE SIZE

Space A	
Ground Floor	2,563 SF
Space B	
Ground Floor	3,437 SF
Total	6,000 SF

CEILING HEIGHT

Space A and B	
Ground Floor	19 FT 3 IN

TERM

Long term

SIGNAGE

Multiple full-height opportunities

FRONTAGE

Space A	
	43 FT on Chambers Street
Space B	
	72 FT on Chambers Street
Total	
	115 FT on Chambers Street

POSSESSION

Space A	Arranged
Space B	Immediate

NEIGHBORS

SoulCycle, Rumble, Joe and the Juice, Blue Smoke, Regal Cinemas, The Palm, Target, Bonobos, Gucci, Vince, Warby Parker, Equinox Fitness Club, Whole Foods Market, Bed Bath & Beyond, and Bluemercury

COMMENTS

Located in the most dense residential confluence of the Financial District, Tribeca and Battery Park City with approximately 7,000 residential units and five million SF of office space within 1/4-mile

Lower Manhattan spending power of over \$8.4 billion, average household income of \$193,751, 15 million annual tourists and over 7,000 hotel rooms

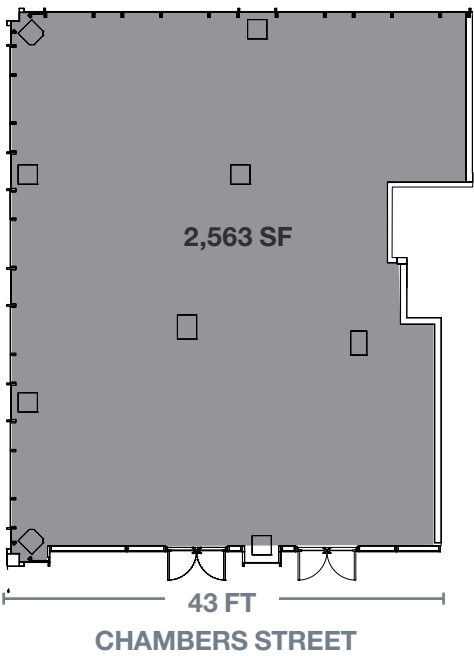
Major thoroughfare for Borough of Manhattan Community College, PS 234, PS 84 and Stuyvesant High School with over 30,000 enrolled students

Manhattan's number two performing Whole Foods Market and number two performing SoulCycle one block south

Most uses considered

Spaces can be taken individually or combined

SPACE A - GROUND FLOOR



SPACE B - GROUND FLOOR



ADDITIONAL IMAGES

SPACE A



SPACE B



INTERIOR PHOTOS



SPACE B



SPACE B



SPACE B



SPACE B

THE NEIGHBORHOOD



14.8M
Annual Visitors



7.7B
Retail Spending Power



61K
Estimated Population



640
Store and
Storefront Services



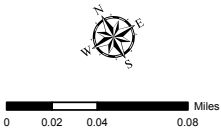
540
Bars and
Restaurants

AREA DEMOGRAPHICS



Legend

- 200 Chambers Street
- Residential Density**
 - Over 100 Residential Units
- Office Density**
 - Over 75,000 Office SF
- Trade Area (1/4-mile)
- Subway & Ridership Annual 2017 (millions)



This is a detailed street map of the Tribeca neighborhood in Manhattan. The map shows a grid of streets including North End Avenue, West 3 Street, Chambers Street, Warren Street, Murray Street, Park Place, and Church Street. Key streets running north-south are Harrison Street, Staple Street, Jay Street, Duane Street, Greenwich Street, and West Broadway. The map is populated with numerous business and cultural landmarks, each accompanied by its logo or name. Notable locations include Tribeca Learning Center P.S. 150, Washington Market Park, and various restaurants, shops, and community centers. A red banner with the text '200 CHAMBERS STREET' is prominently displayed across the middle of the map. The map also includes a compass rose in the top right corner and a scale bar in the bottom left corner.

Streets: North End Avenue, West 3 Street, Chambers Street, Warren Street, Murray Street, Park Place, Church Street, Harrison Street, Staple Street, Jay Street, Duane Street, Greenwich Street, West Broadway.

Landmarks and Businesses: Tribeca Learning Center P.S. 150, Washington Market Park, Tribeca Wine Merchants, The Washington Market School, The Ludlow Shop, The Odeon, Tiny's Restaurant, Balloon Saloon, The Frederick Hotel, Tribeca Health and Fitness, Tribeca Dental, Tribeca Kitchen, Tribeca Market School, The Washington Market School, The Ludlow Shop, The Odeon, Tiny's Restaurant, Balloon Saloon, The Frederick Hotel, Tribeca Health and Fitness, Tribeca Dental, Tribeca Kitchen.

200 CHAMBERS STREET

