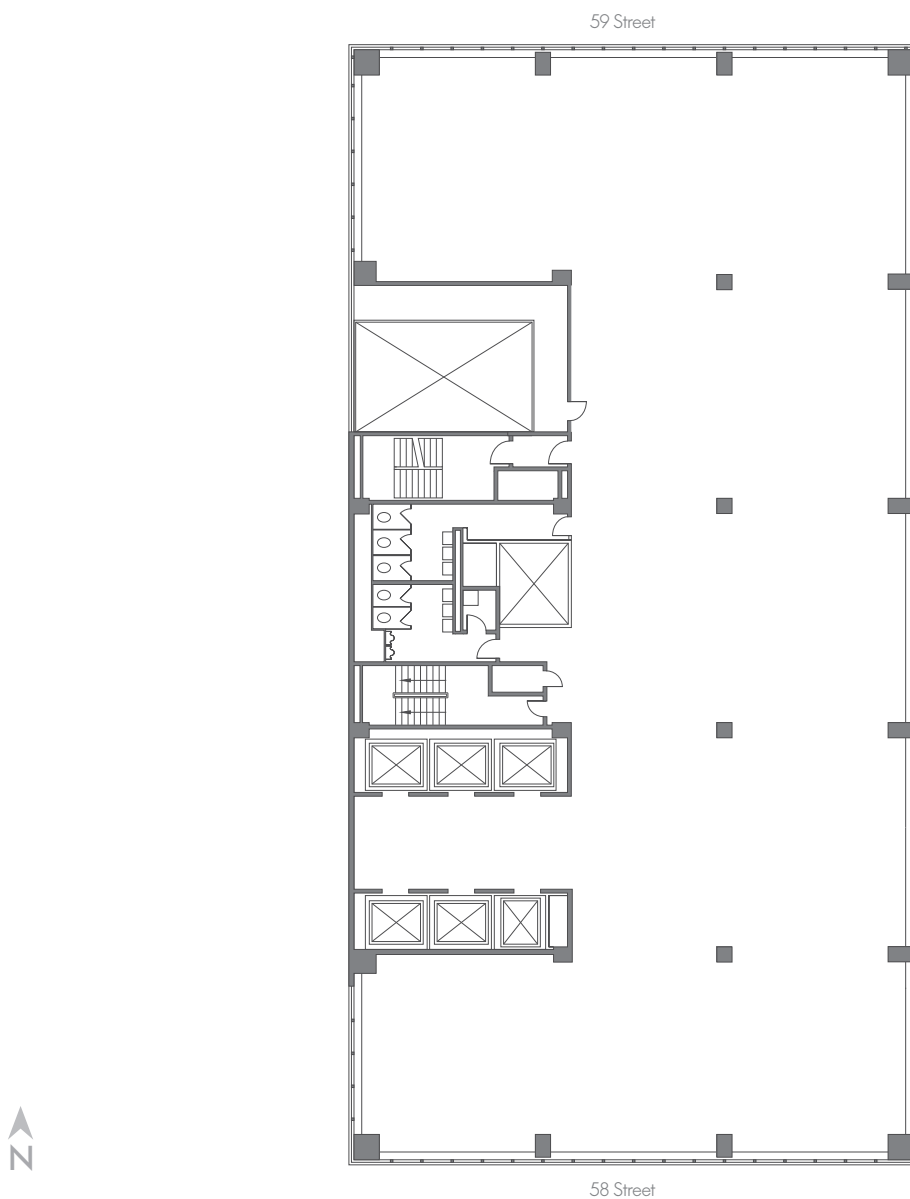


110 EAST 59 STREET

PLAZA DISTRICT

Tower Floors | Core & Shell | 13,284 SF



Jack Resnick & Sons
Owners & Builders Since 1928

110 East 59 Street
New York, NY 10022-1379
resnicknyc.com

Fran Delgorio
646.253.3100
fdelgorio@resnicknyc.com

Brett S. Greenberg
646.253.3113
bgreenberg@resnicknyc.com



No warranty or representation, express or implied, is made as to the accuracy of the information contained herein, and same is submitted subject to errors, omissions, change of price, rental other conditions, withdrawal without notice, and to any special listing conditions, imposed by our principals.



110 EAST 59 STREET

PLAZA DISTRICT

Tower Floors | OFFICE INTENSIVE Test-Fit | 13,284 SF



Jack Resnick & Sons
Owners & Builders Since 1928

110 East 59 Street
New York, NY 10022-1379
resnicknyc.com

Fran Delgorio
646.253.3100
fdelgorio@resnicknyc.com

Brett S. Greenberg
646.253.3113
bgreenberg@resnicknyc.com



No warranty or representation, express or implied, is made as to the accuracy of the information contained herein, and same is submitted subject to errors, omissions, change of price, rental other conditions, withdrawal without notice, and to any special listing conditions, imposed by our principals.



110 EAST 59 STREET

PLAZA DISTRICT

Tower Floors | COLLABORATIVE Test-Fit | 13,284 SF

Workspace

	Seats
Executive Office	2
Assistant	2
Workstation	47
Reception	1

Collaboration

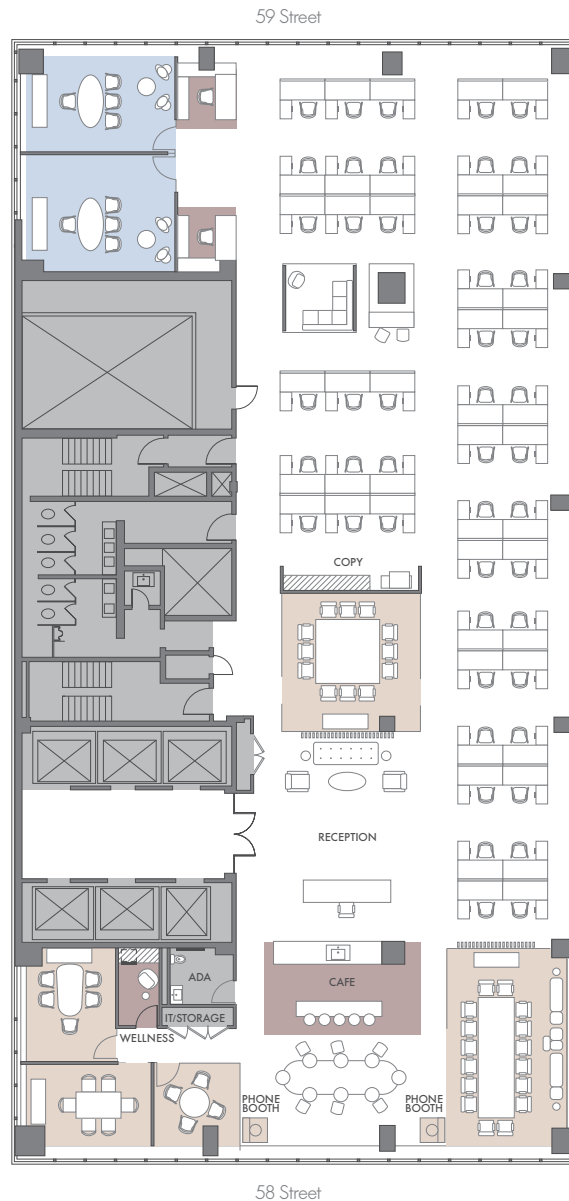
	Seats
Meeting Room (5)	43

Amenities

	Seats
Cafe	5

Additional

Coat Closet
Copy Area
IT Room/Storage
Wellness Room
Phone Booth (2)
ADA Restroom



Jack Resnick & Sons
Owners & Builders Since 1928

110 East 59 Street
New York, NY 10022-1379
resnicknyc.com

Fran Delgorio
646.253.3100
fdelgorio@resnicknyc.com

Brett S. Greenberg
646.253.3113
bgreenberg@resnicknyc.com



No warranty or representation, express or implied, is made as to the accuracy of the information contained herein, and same is submitted subject to errors, omissions, change of price, rental other conditions, withdrawal without notice, and to any special listing conditions, imposed by our principals.