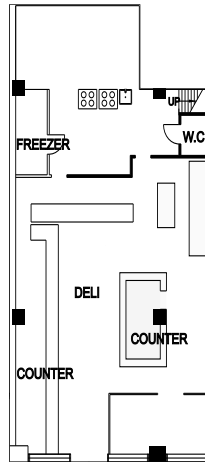


111 EAST 58 STREET

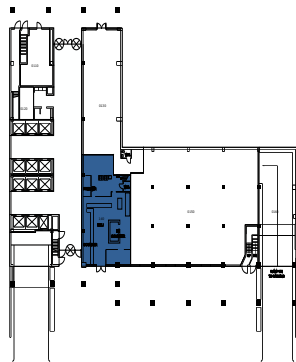
PLAZA DISTRICT

SHARED BUILDING LOBBY W/ 110 EAST 59 STREET

Partial Ground Retail | 1,805 SF



110 East 59th Street



111 East 58th Street

Key Plan - Not to scale



Jack Resnick & Sons
Owners & Builders Since 1928



110 East 59 Street
New York, NY 10022-1379
resnicknyc.com

Fran Delgorio
646.253.3100
fdelgorio@resnicknyc.com

Brett S. Greenberg
646.253.3113
bgreenberg@resnicknyc.com

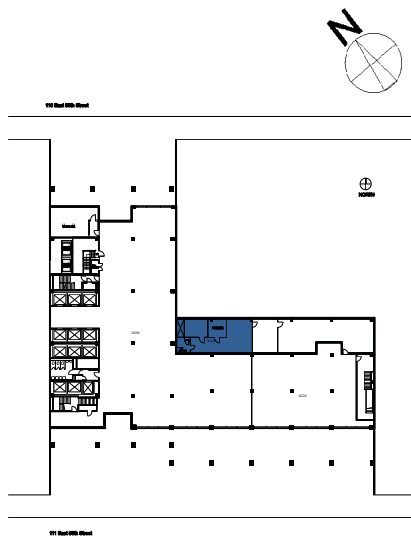
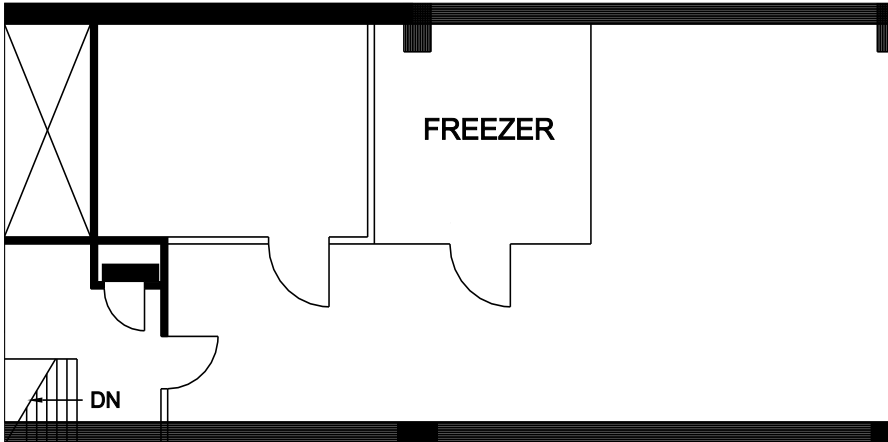
No warranty or representation, express or implied, is made as to the accuracy of the information contained herein, and same is submitted subject to errors, omissions, change of price, rental other conditions, withdrawal without notice, and to any special listing conditions, imposed by our principals.

111 EAST 58 STREET

PLAZA DISTRICT

shared building lobby w/ 110 EAST 59 STREET

Partial Ground Retail | 2nd Floor | 931 SF



Key Plan - Not to scale



Jack Resnick & Sons
Owners & Builders Since 1928



110 East 59 Street
New York, NY 10022-1379
resnicknyc.com

Fran Delgorio
646.253.3100
fdelgorio@resnicknyc.com

Brett S. Greenberg
646.253.3113
bgreenberg@resnicknyc.com

No warranty or representation, express or implied, is made as to the accuracy of the information contained herein, and same is submitted subject to errors, omissions, change of price, rental other conditions, withdrawal without notice, and to any special listing conditions, imposed by our principals.

