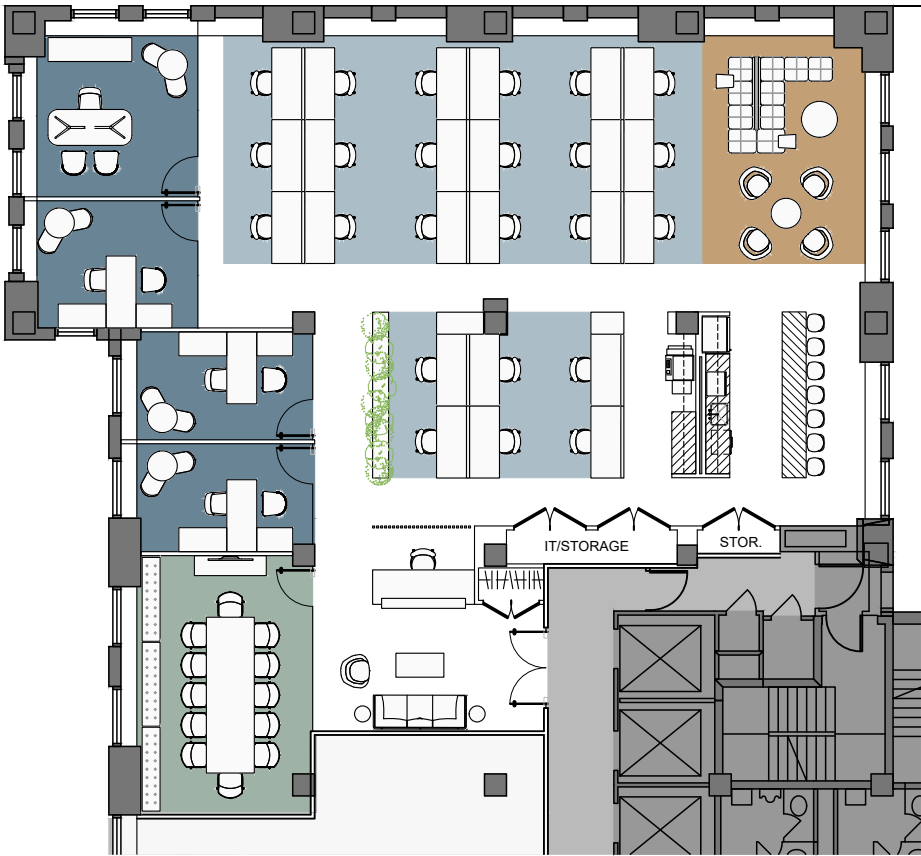
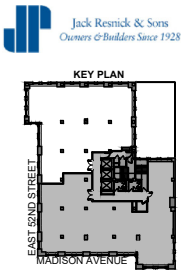


485 MADISON AVENUE

PLAZA DISTRICT

Partial 17th Floor | Test-Fit | 5,743 SF

LEGEND	
WORKSPACE	SEATS
PRIVATE OFFICE	4
BENCHING (6'X30")	24
RECEPTION	1
TOTAL HEADCOUNT	29
COLLABORATIVE SPACE	
CONFERENCE ROOM	1
OPEN LOUNGE	1
SUPPORT	
PANTRY	1
COAT CLOSET	1
COPY AREA	1
STORAGE ROOM	1
IT/STORAGE ROOM	1



485 MADISON AVENUE

PREBUILD TEST FIT B
05.04.22

17TH FLOOR - EAST

JP Jack Resnick & Sons
Owners & Builders Since 1928

110 East 59 Street
New York, NY 10022-1379
resnicknyc.com

Adam Rappaport
646.253.3111
arappaport@resnicknyc.com

Brett S. Greenberg
646.253.3113
bgreenberg@resnicknyc.com



No warranty or representation, express or implied, is made as to the accuracy of the information contained herein, and same is submitted subject to errors, omissions, change of price, rental other conditions, withdrawal without notice, and to any special listing conditions, imposed by our principals.

485 MADISON AVENUE

PLAZA DISTRICT

Commercial | Test-Fit #1



Jack Resnick & Sons
Owners & Builders Since 1928



110 East 59 Street
New York, NY 10022-1379
resnicknyc.com

Adam Rappaport
646.253.3111
arappaport@resnicknyc.com

Brett S. Greenberg
646.253.3113
bgreenberg@resnicknyc.com

No warranty or representation, express or implied, is made as to the accuracy of the information contained herein, and same is submitted subject to errors, omissions, change of price, rental other conditions, withdrawal without notice, and to any special listing conditions, imposed by our principals.

485 MADISON AVENUE

PLAZA DISTRICT

Commercial | Test-Fit # 2



Jack Resnick & Sons
Owners & Builders Since 1928



110 East 59 Street
New York, NY 10022-1379
resnicknyc.com

Adam Rappaport
646.253.3111
arappaport@resnicknyc.com

Brett S. Greenberg
646.253.3113
bgreenberg@resnicknyc.com

No warranty or representation, express or implied, is made as to the accuracy of the information contained herein, and same is submitted subject to errors, omissions, change of price, rental other conditions, withdrawal without notice, and to any special listing conditions, imposed by our principals.

485 MADISON AVENUE

PLAZA DISTRICT

Commercial | Test-Fit # 3



Jack Resnick & Sons
Owners & Builders Since 1928



110 East 59 Street
New York, NY 10022-1379
resnicknyc.com

Adam Rappaport
646.253.3111
arappaport@resnicknyc.com

Brett S. Greenberg
646.253.3113
bgreenberg@resnicknyc.com

No warranty or representation, express or implied, is made as to the accuracy of the information contained herein, and same is submitted subject to errors, omissions, change of price, rental other conditions, withdrawal without notice, and to any special listing conditions, imposed by our principals.