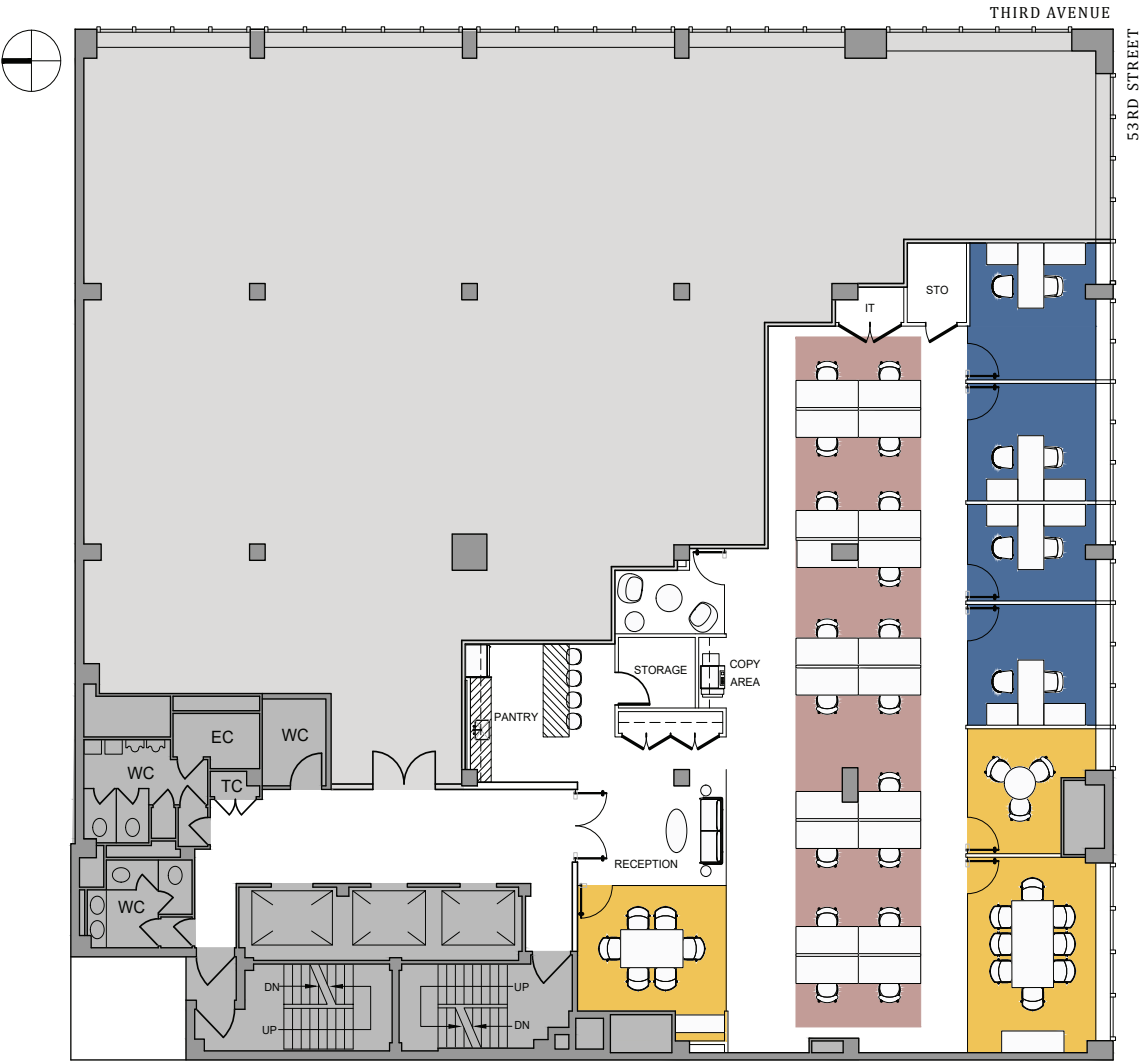


880 THIRD AVENUE

PLAZA DISTRICT

Partial 4th Floor | 5,249 SF | Test-fit



880
THIRD AVENUE
SOUTH-WEST SUITE

LEGEND

WORKSPACE	
PRIVATE OFFICE	4
BENCHING (6'X30")	18
TOTAL HEADCOUNT	22
COLLABORATIVE SPACE	
CONFERENCE ROOM	3
SUPPORT SPACE	
PANTRY	1
PHONE ROOM	1
COAT CLOSET	1
COPY AREA	1
IT ROOM	1
STORAGE	2

Jack Resnick & Sons
MKDA

Jack Resnick & Sons
Owners & Builders Since 1928

110 East 59 Street
New York, NY 10022-1379
resnicknyc.com

Adam Rappaport
646.253.3111
arappaport@resnicknyc.com

Brett S. Greenberg
646.253.3113
bgreenberg@resnicknyc.com

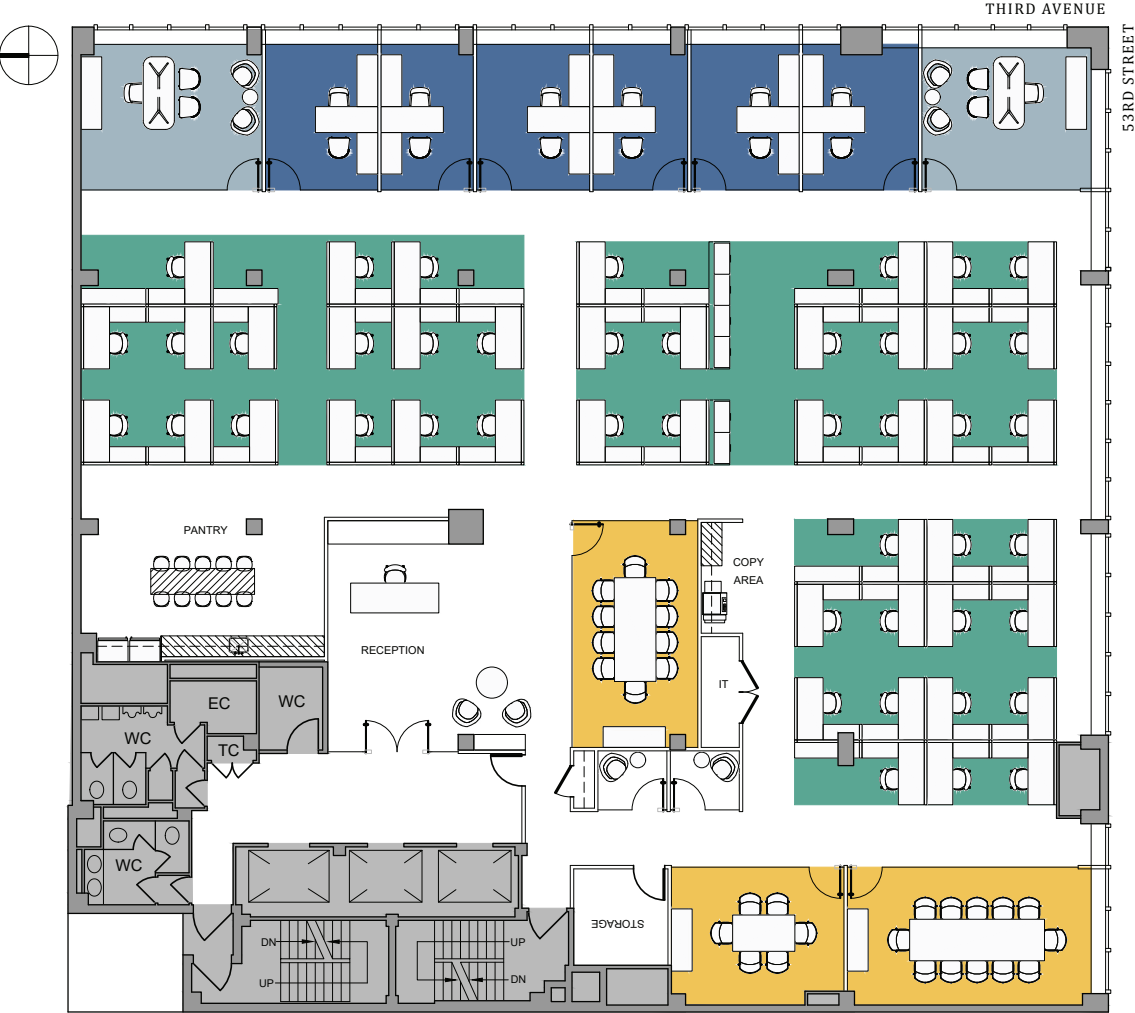


No warranty or representation, express or implied, is made as to the accuracy of the information contained herein, and same is submitted subject to errors, omissions, change of price, rental other conditions, withdrawal without notice, and to any special listing conditions, imposed by our principals.

880 THIRD AVENUE

PLAZA DISTRICT

Entire 4th Floor | 12,081 SF | Test-fit



880
THIRD AVENUE
FULL FLOOR

LEGEND

WORKSPACE	
EXECUTIVE OFFICE	2
PRIVATE OFFICE	6
WORKSTATION (6'X6')	45
RECEPTION	1
TOTAL HEADCOUNT	54
COLLABORATIVE SPACE	
CONFERENCE ROOM	3
SUPPORT SPACE	
PANTRY	1
PHONE ROOM	2
COAT CLOSET	1
COPY AREA	1
IT ROOM	1
STORAGE	1

 Jack Resnick & Sons
MKDA

 Jack Resnick & Sons
Owners & Builders Since 1928

110 East 59 Street
New York, NY 10022-1379
resnicknyc.com

Adam Rappaport
646.253.3111
arappaport@resnicknyc.com

Brett S. Greenberg
646.253.3113
bgreenberg@resnicknyc.com



No warranty or representation, express or implied, is made as to the accuracy of the information contained herein, and same is submitted subject to errors, omissions, change of price, rental other conditions, withdrawal without notice, and to any special listing conditions, imposed by our principals.