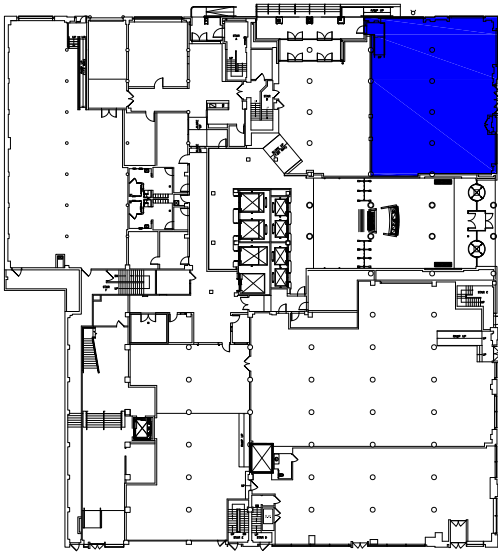
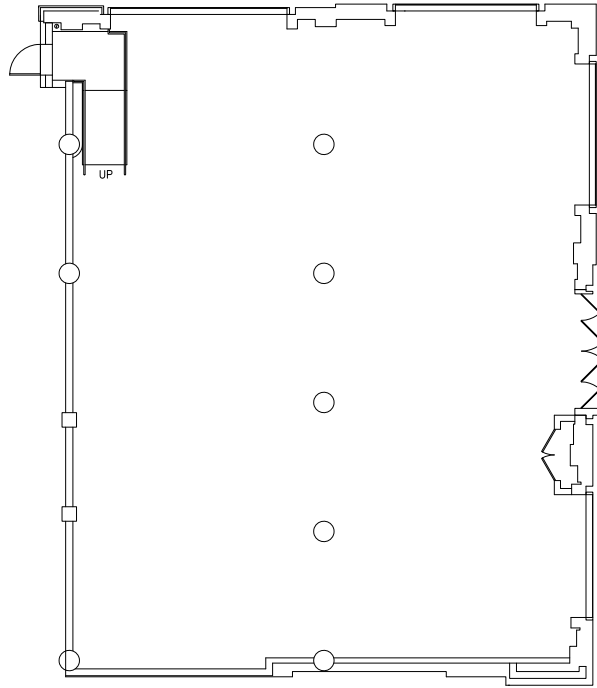


315 HUDSON STREET

HUDSON SQUARE DISTRICT

Corner of Hudson & Vandam | Core & Shell | 3,274 SF



Key Plan - Not to scale



Jack Resnick & Sons
Owners & Builders Since 1928

110 East 59 Street
New York, NY 10022-1379
resnicknyc.com

Adam S. Rappaport
646.253.3111
arappaport@resnicknyc.com

Brett S. Greenberg
646.253.3113
bgreenberg@resnicknyc.com



No warranty or representation, express or implied, is made as to the accuracy of the information contained herein, and same is submitted subject to errors, omissions, change of price, rental other conditions, withdrawal without notice, and to any special listing conditions, imposed by our principals.